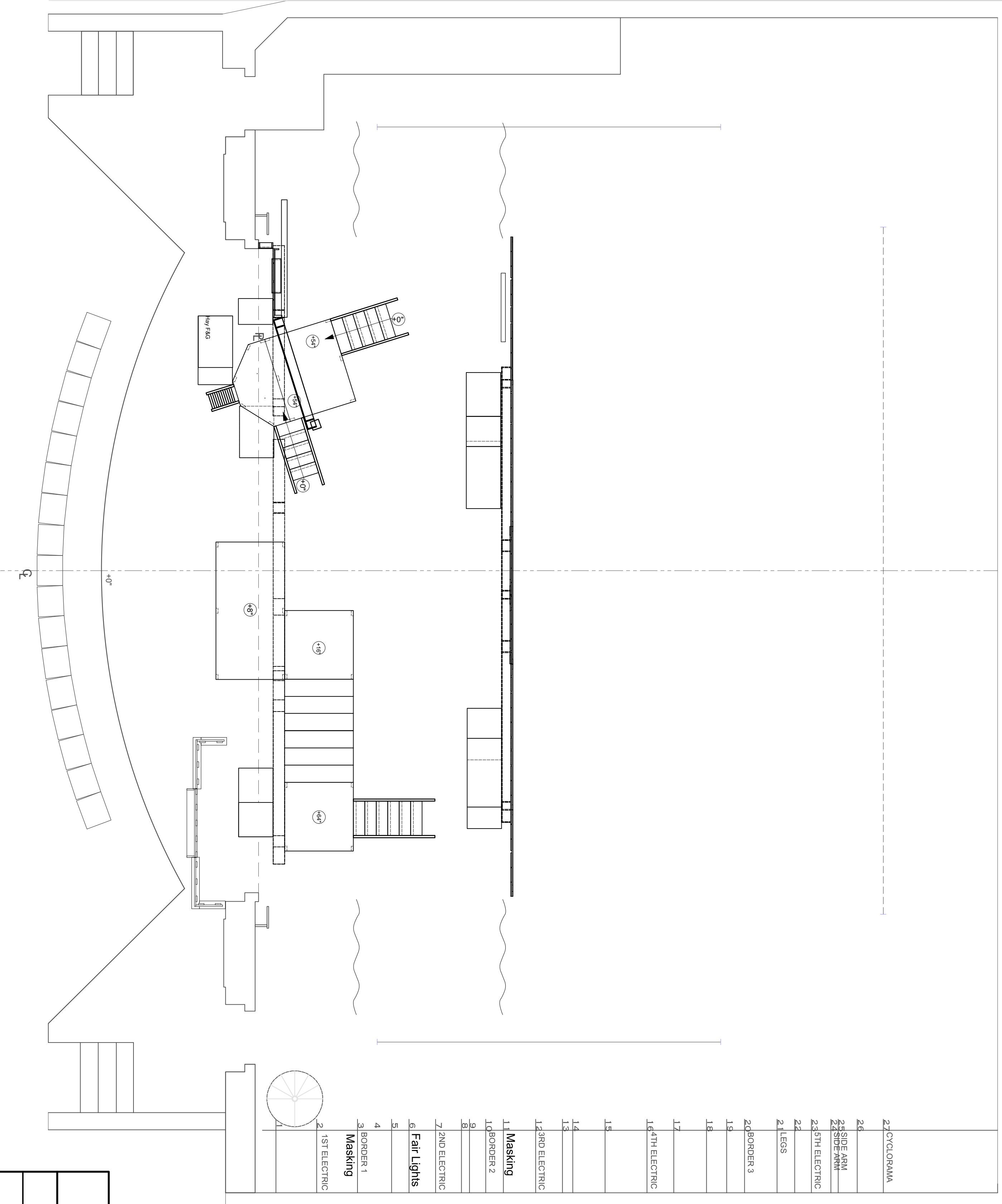


NOTES:

- Please see elevations for details
- Haystacks F & G are movable and are placed in this drawing for reference only. They may never actually play in this position. Hay positions are at the discretion of the director
- Fence units (3 total) are movable and are placed in this drawing for reference only. They may never actually play in this position. Hay positions are at the discretion of the director
- Barn A, B, C and Rafters B can be hung on lineset 11 for support but may also stand on their own. This is at the discretion of the TD
- Front Rafters and Barn D can be hung on lineset 1 for support but may also stand on their own. This is at the discretion of the TD
- Black legs should be hung on Lineset 11 and 3 for masking

Charlotte's Web

GP-Gen with Labels	Date : 11/23/2018
Arkansas Children's Theatre	Scale : 1/4"=1'-0"
Director : Katie Campbell	1 OF 14
Designer : Vandy Scoates	
Revisions : 11/23/18	



- NOTES:
- Haystacks F & G are movable and are shown in designer's preferable positions. Actual hay positions are at the discretion of the director
 - Fence units (3 total) are movable and are shown in designer's preferable positions. Actual hay positions are at the discretion of the director

27	CYCLORAMA
26	
25	SIDE ARM
22	SIDE ARM
23	5TH ELECTRIC
22	
21	LEGS
20	BORDER 3
19	
18	
17	
16	4TH ELECTRIC
15	
14	
13	
12	3RD ELECTRIC
11	Masking
10	BORDER 2
9	
8	
7	2ND ELECTRIC
6	Fair Lights
5	
4	
3	BORDER 1
2	Masking
1	1ST ELECTRIC

Charlotte's Web

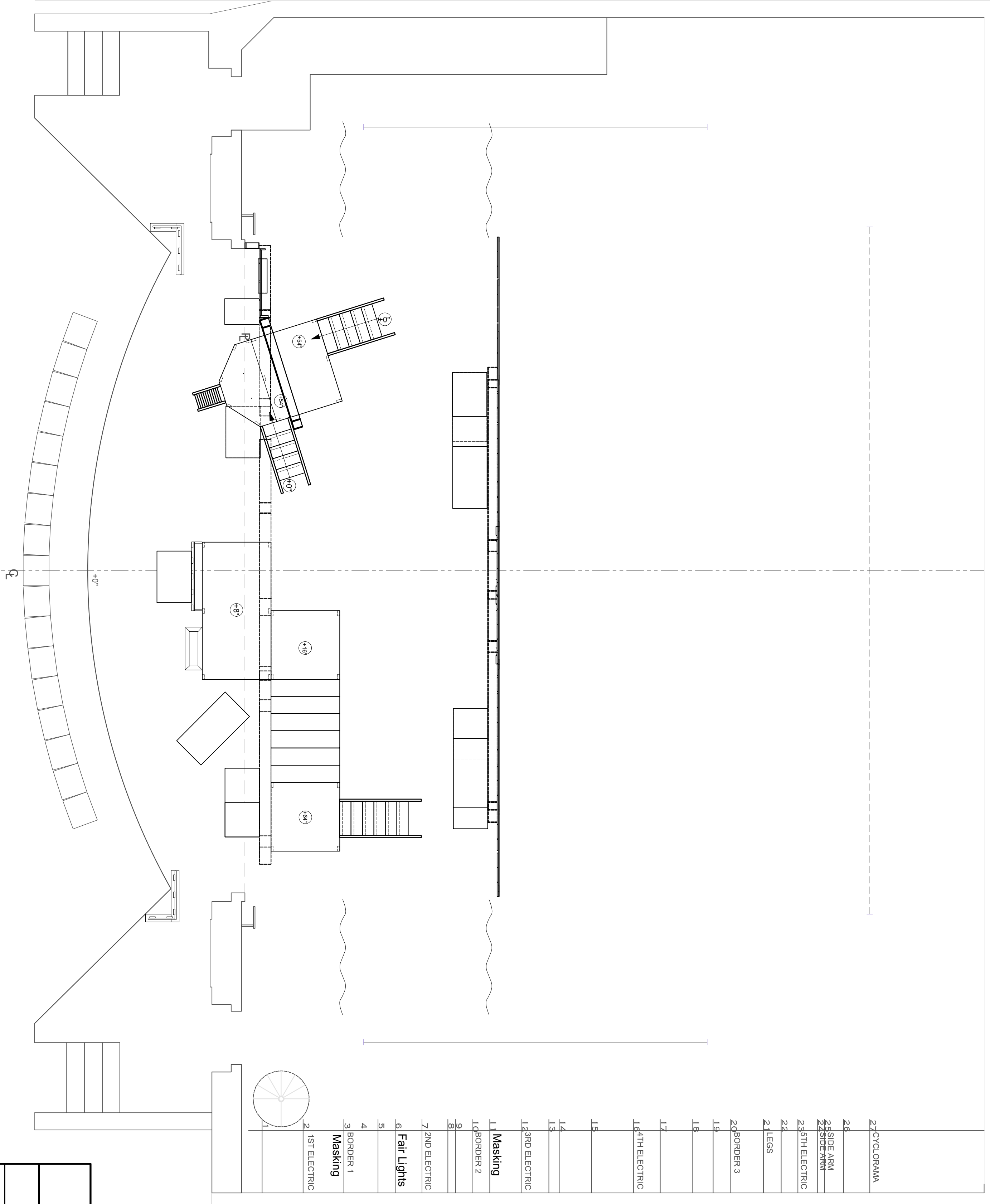
GP-Arable Date : 11/23/2018

Arkansas Children's Theatre Scale : 1/4" = 1'-0"

Director : Katie Campbell

Designer : Vandy Scoates

Revisions : 11/23/18



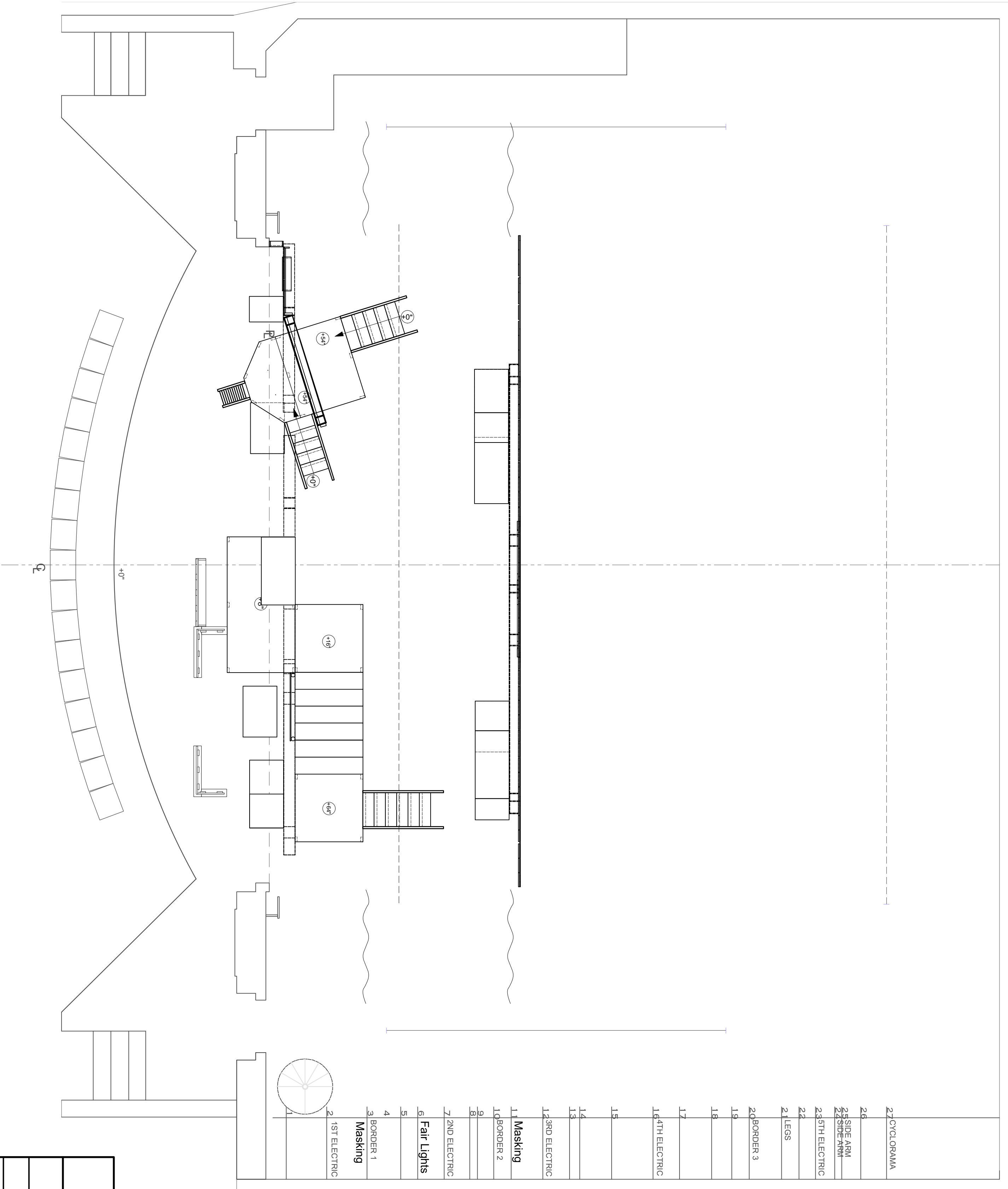
NOTES:

- Haystacks F & G are movable and are shown in designer's preferable positions. Actual hay positions are at the discretion of the director
- Fence units (3 total) are movable and are shown in designer's preferable positions. Actual hay positions are at the discretion of the director
- Drawing also shows preferable placement of trough. Trough can be pulled from stock or made by shop. Please contact designer if it is being built so Ms. Scoates can include elevation

27	CYCLORAMA
28	
25	SIDE ARM
25	SIDE ARM
23	5TH ELECTRIC
22	
21	LEGS
20	BORDER 3
19	
18	
17	
16	4TH ELECTRIC
15	
14	
13	
12	3RD ELECTRIC
11	Masking
10	BORDER 2
9	
8	
7	2ND ELECTRIC
6	Fair Lights
5	
4	
3	BORDER 1
Masking	
2	1ST ELECTRIC
1	

Charlotte's Web

GP Homer	Date : 11/23/2018
Arkansas Children's Theatre	Scale : 1/4" = 1'-0"
Director : Katie Campbell	3 OF 14
Designer : Vandy Scoates	
Revisions : 11/23/18	



22	CYCLORAMA
26	
28	SIDE ARM
27	SIDE ARM
23	5TH ELECTRIC
22	
2	LEGS
20	BORDER 3
19	
18	
17	
16	4TH ELECTRIC
15	
14	
13	
12	3RD ELECTRIC
11	Masking
10	BORDER 2
9	
8	
7	2ND ELECTRIC
6	Fair Lights
5	
4	BORDER 1
3	Masking
2	1ST ELECTRIC
1	

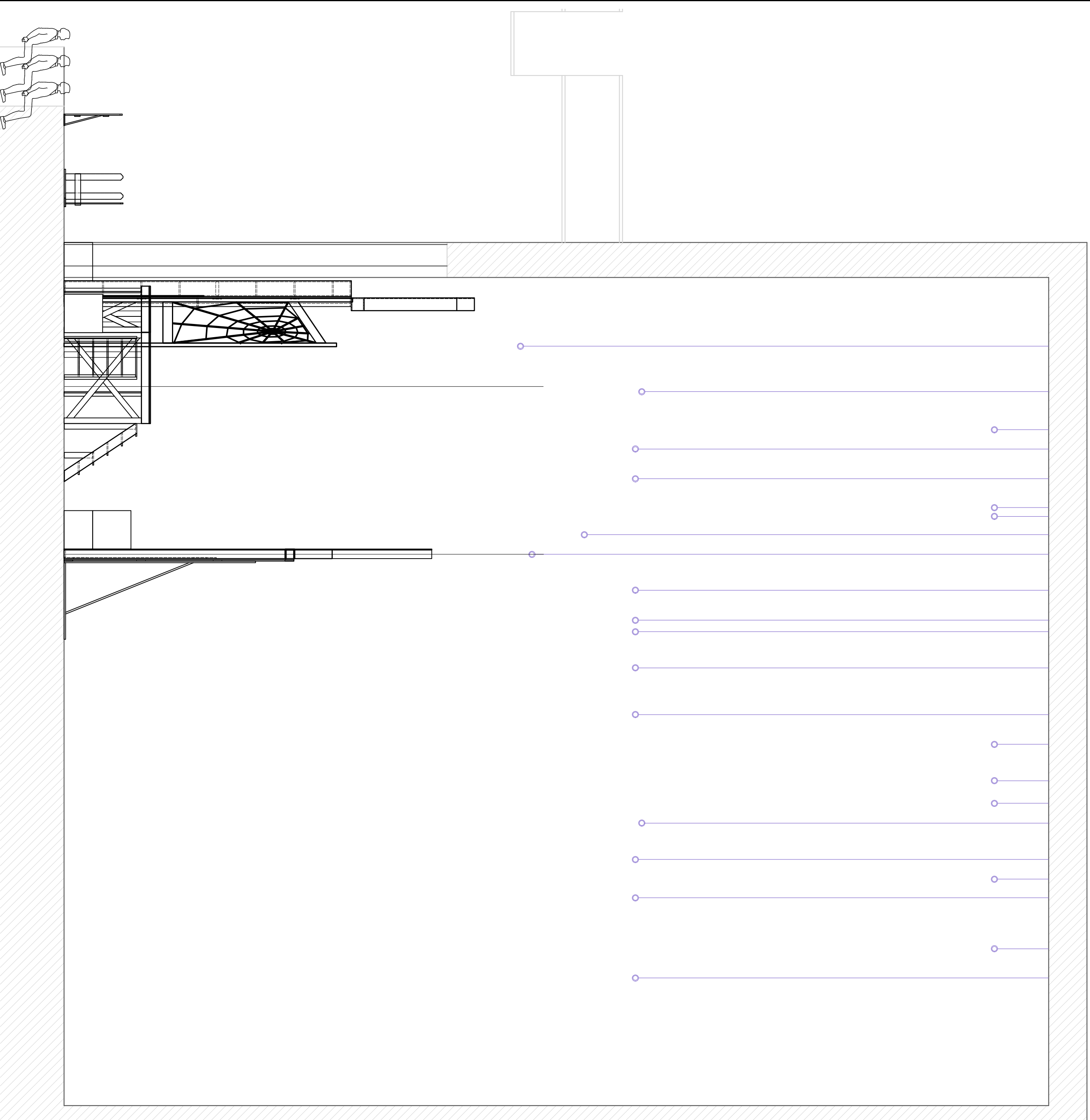
NOTES:

- Haystacks F & G are movable and are shown in designer's preferable positions. Actual hay positions are at the discretion of the director
- Fence units (3 total) are movable and are shown in designer's preferable positions. Actual hay positions are at the discretion of the director
- Fair Lights are on Lineset 6

Charlotte's Web

GP-Fair	Date : 11/23/2018
Arkansas Children's Theatre	Scale : 1/4" = 1'-0"
Director : Katie Campbell	4 OF 14
Designer : Vandy Scoates	
Revisions : 11/23/18	

1	
2	1ST ELECTRIC
3	Masking BORDER 1
4	
5	
6	Fair Lights
7	2ND ELECTRIC
8	
9	
10	BORDER 2
11	Masking
12	3RD ELECTRIC
13	
14	
15	
16	4TH ELECTRIC
17	
18	
19	
20	BORDER 3
21	LEGS
22	
23	5TH ELECTRIC
24	SIDE ARM
25	SIDE ARM
26	
27	CYCLORAMA



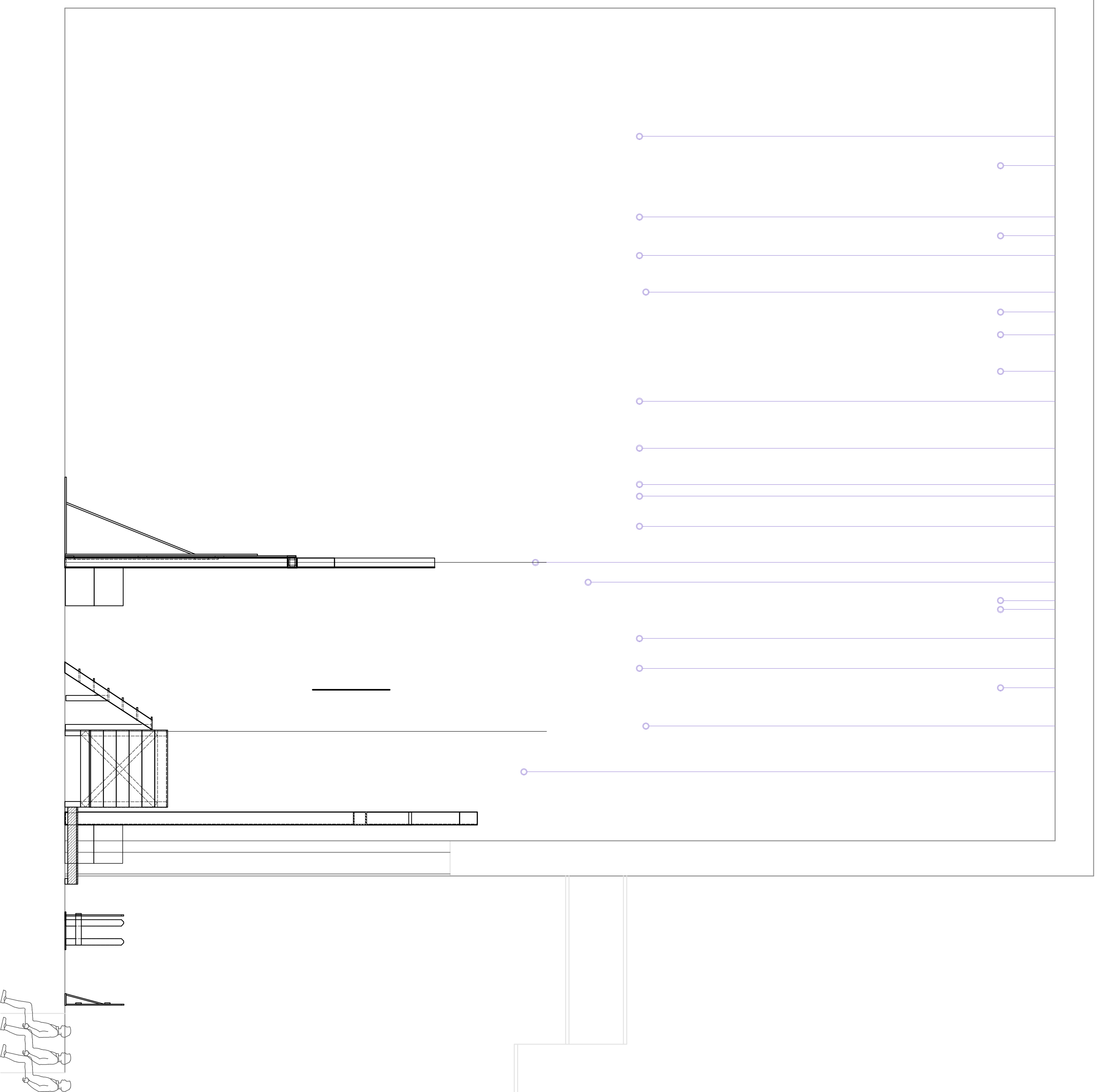
NOTES:

- Please see elevations for details
- Haystacks F & G are movable and are placed in this drawing for reference only. They may never actually play in this position. Hay positions are at the discretion of the director
- Fence units (3 total) are movable and are placed in this drawing for reference only. They may never actually play in this position. Hay positions are at the discretion of the director
- Barn A, B, C and Rafter B can be hung on lineset 11 for support but may also stand on their own. This is at the discretion of the TD
- Front Rafters and Barn D can be hung on lineset 1 for support but may also stand on their own. This is at the discretion of the TD
- Black legs should be hung on Lineset 11 and 3 for masking

Charlotte's Web

SEC-Stage Right		Date : 11/23/2018
Arkansas Children's Theatre		Scale : 1/4" = 1'-0"
Director : Katie Campbell		7 OF 14
Designer : Vandy Scoates		
Revisions : 11/23/18		

CYCLORAMA	27
	26
SIDE ARM	25
SIDE ARM	24
5TH ELECTRIC	23
	22
LEGS	21
	20
BORDER 3	20
	19
	18
	17
4TH ELECTRIC	16
	15
	14
	13
3RD ELECTRIC	12
	11
Masking	11
BORDER 2	10
	9
	8
2ND ELECTRIC	7
	6
Fair Lights	6
	5
	4
BORDER 1	3
Masking	3
1ST ELECTRIC	2
	1



NOTES:

- Please see elevations for details
- Haystacks F & G are movable and are placed in this drawing for reference only. They may never actually play in this position. Hay positions are at the discretion of the director
- Fence units (3 total) are movable and are placed in this drawing for reference only. They may never actually play in this position. Hay positions are at the discretion of the director
- Barn A, B, C and Ratters B can be hung on lineset 11 for support but may also stand on their own. This is at the discretion of the TD
- Front Ratters and Barn D can be hung on lineset 1 for support but may also stand on their own. This is at the discretion of the TD
- Black legs should be hung on Lineset 11 and 3 for masking
- Fair Lights are hung on lineset 3 and are a trim height of 12'-0"

Charlotte's Web

SEC- Stage Left (Fair)		Date : 11/23/2018
Arkansas Children's Theatre		Scale : 1/4" = 1'-0"
Director : Katie Campbell	<div style="font-size: 2em; font-weight: bold;">8</div> <div style="font-size: 1.2em;">OF</div> <div style="font-size: 2em; font-weight: bold;">14</div>	
Designer : Vandy Scoates		
Revisions : 11/23/18		